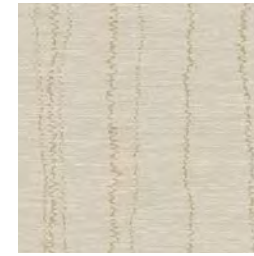


colour & design® CANTON RAINSILK™



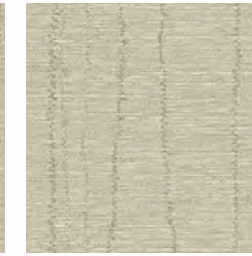
CD2-CTR-01 Ideal White



CD2-CTR-03 Sandpearl



CD2-CTR-05 Beach Linen



CD2-CTR-09 Natural



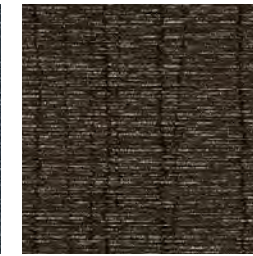
CD2-CTR-13 Clean Slate



CD2-CTR-15 Silver Fern



CD2-CTR-31 Captain's Quarters



CD2-CTR-35 Nocturnal



CD2-CTR-41 Scribbly Gum



CD2-CTR-43 Urban Nature



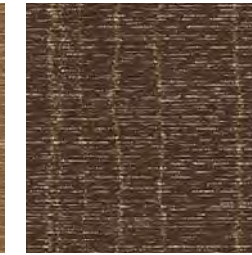
CD2-CTR-45 Basket Case



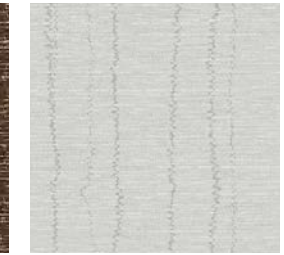
CD2-CTR-47 Clover



CD2-CTR-49 Derby Days



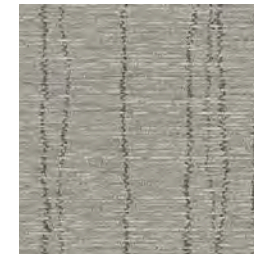
CD2-CTR-51 Canyonland



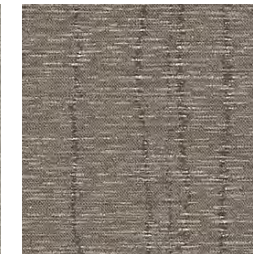
CD2-CTR-53 Milk Glass



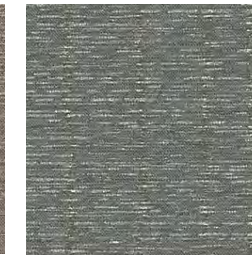
CD2-CTR-55 Ice House



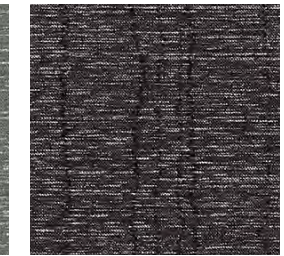
CD2-CTR-57 Porchlight



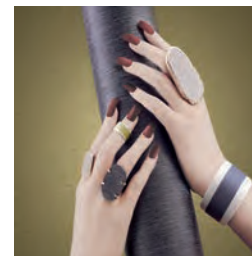
CD2-CTR-59 River Rail



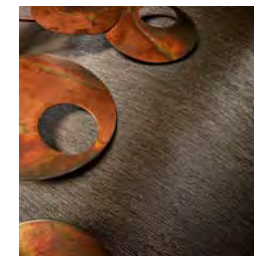
CD2-CTR-61 Altitude



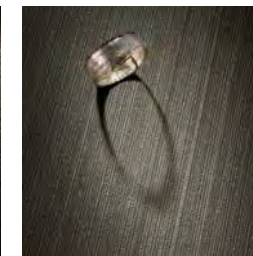
CD2-CTR-63 Vintage Vibe



FOR CANTON CREPE SILK MATTE [CLICK HERE](#)



FOR CANTON CREPE SILK SATIN [CLICK HERE](#)



FOR SIMILAR TEXTURES [CLICK HERE](#)

Type II 20 oz | Width: 52"/54" | Backing: Osnaburg | Match: Random Match Reversible Pattern  
Repeat 54"H x 18"V | Fire Rating: Class A | Flame Spread: 15 | Smoke Development: 20

[CLICK COLOURS](#)

[CLICK SAMPLES](#)

[CLICK SPECS](#)

[CONTACT US](#)