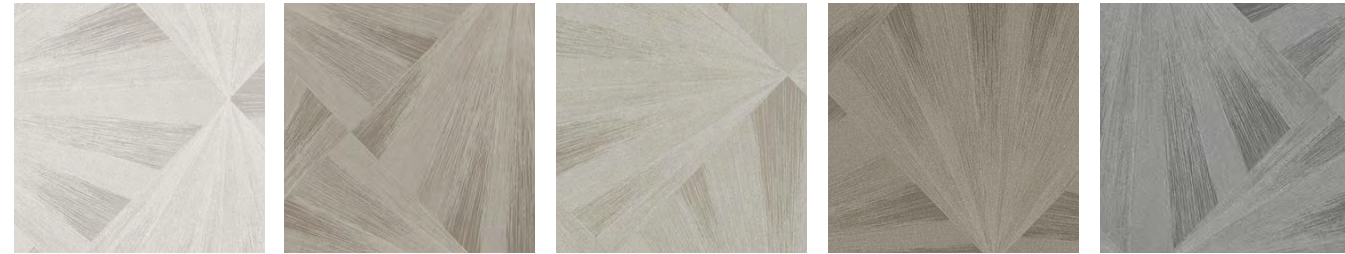


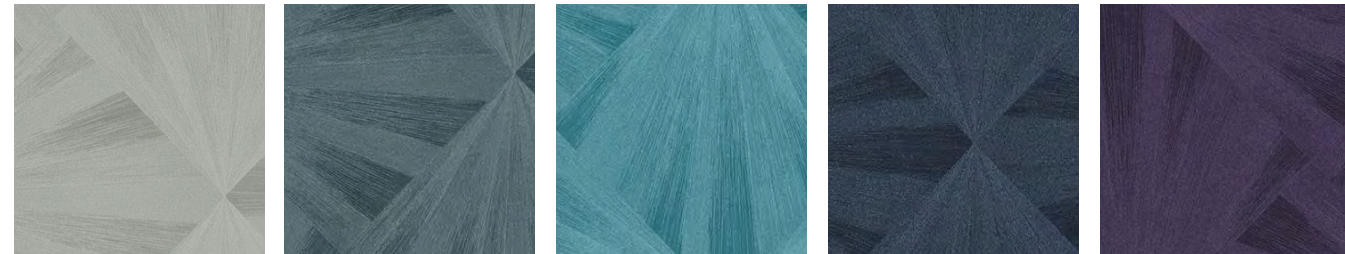


colour & design®

ESTRELLE™



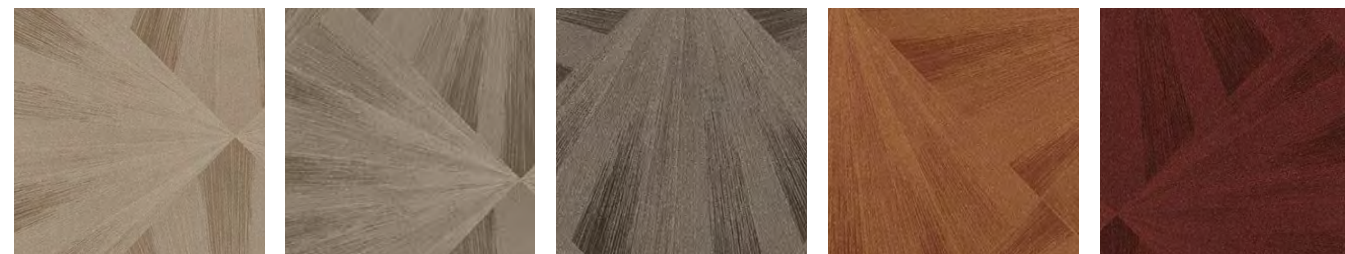
CD2-EST-01 Prism CD2-EST-02 Stardust CD2-EST-03 Staying Neutral CD2-EST-04 Geode CD2-EST-05 Shattered Graphite



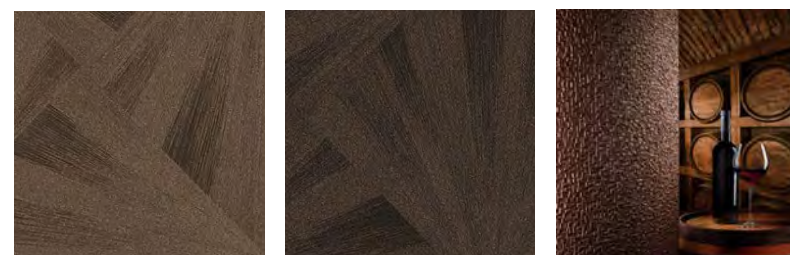
CD2-EST-06 Cut Glass CD2-EST-07 North Point CD2-EST-08 Capri CD2-EST-09 Deep Space CD2-EST-10 Ultra Violet



CD2-EST-11 Light Refraction CD2-EST-12 Tetonc CD2-EST-13 Polaris CD2-EST-14 Aura CD2-EST-15 Chopstick



CD2-EST-16 Mango Wood CD2-EST-17 Rustic Ash CD2-EST-18 Portobello CD2-EST-19 Solar Flare CD2-EST-20 Sinopia



CD2-EST-21 Parquet CD2-EST-22 Chocolate Noir FOR SIMILAR TEXTURES CLICK HERE

Type II 20 oz | Width: 52"/54" | Backing: Non-Woven | Match: Non-Reversible Straight Across Match Repeat 52"H x 18"V | Fire Rating: Class A | Flame Spread: 10 | Smoke Development: 10

[CLICK COLOURS](#)

[CLICK SAMPLES](#)

[CLICK SPECS](#)

[CONTACT US](#)

FASHION  
DESIGN RESOURCE

Copyright 2018. Colour & Design, Inc.  
Any copying or other use is expressly prohibited.  
Made in the U.S.A.

AQUA-CLEAR  
Water Based Topcoat

HOW TO ACHIEVE THE HOME OF YOUR DREAMS