

colour & design[©]

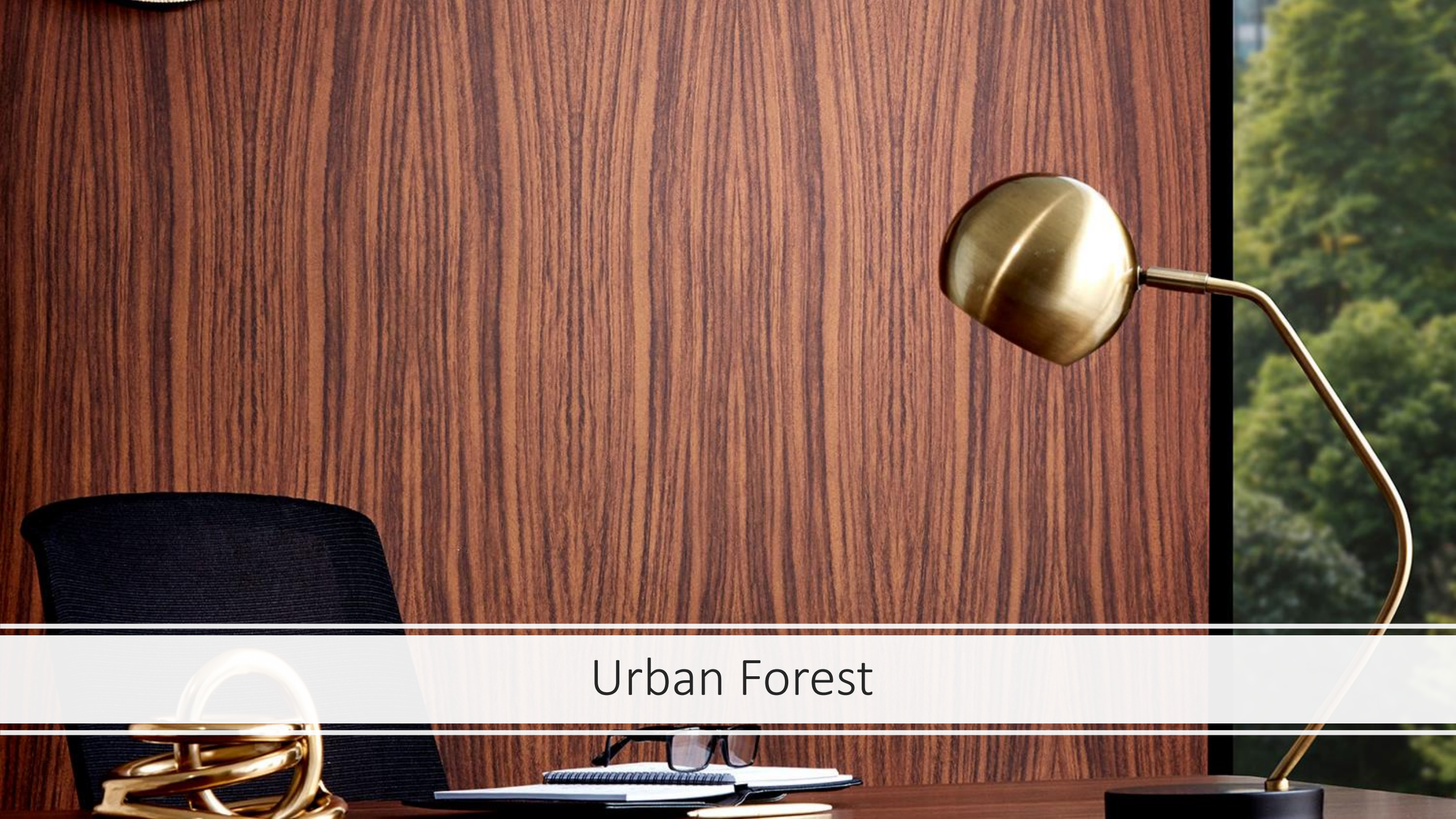
Recent releases and our favorites!



Sarina Silk



Bellalino



Urban Forest



Woodlands Edge

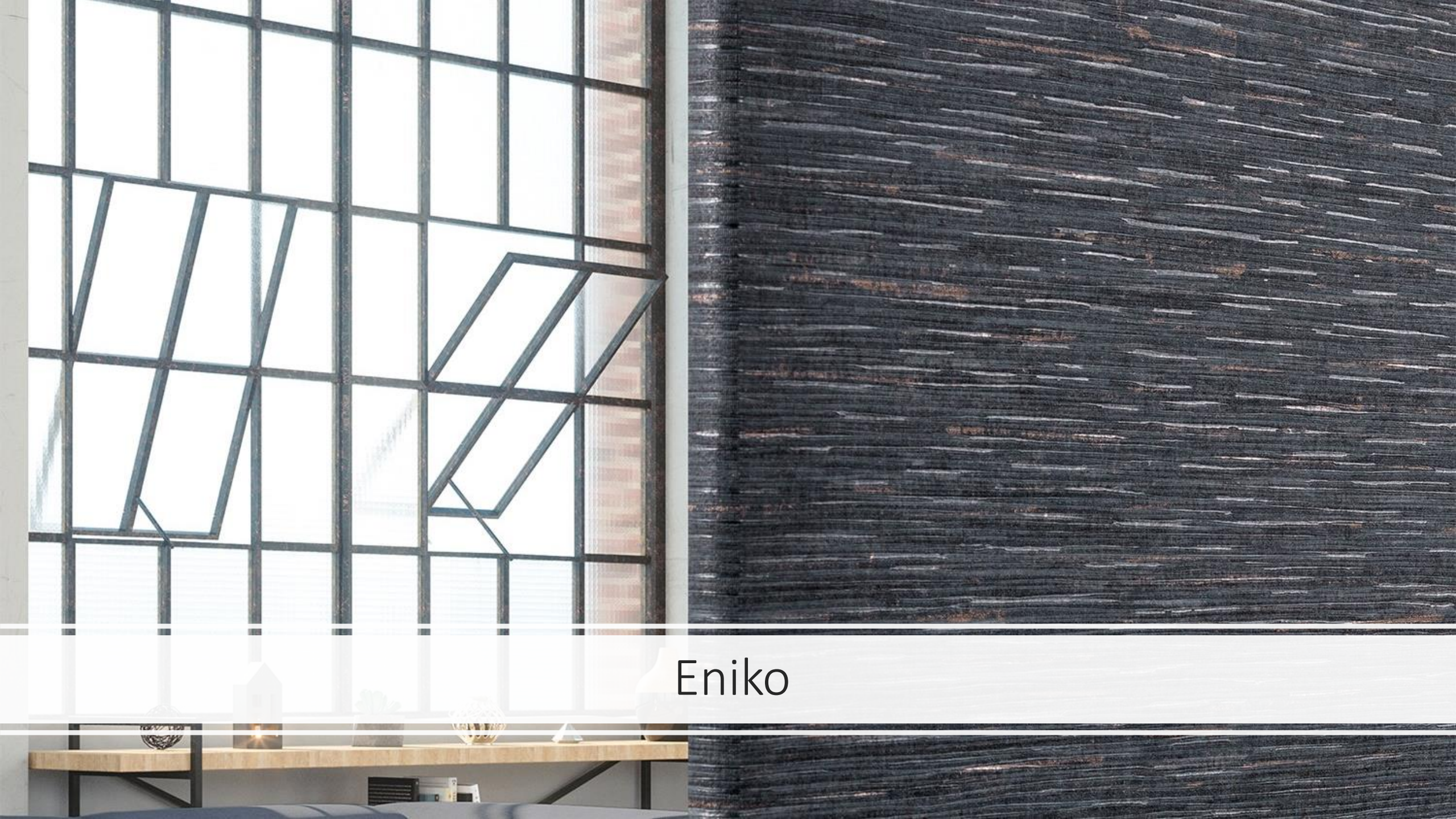


Lario



Anique





Eniko



Loblolly

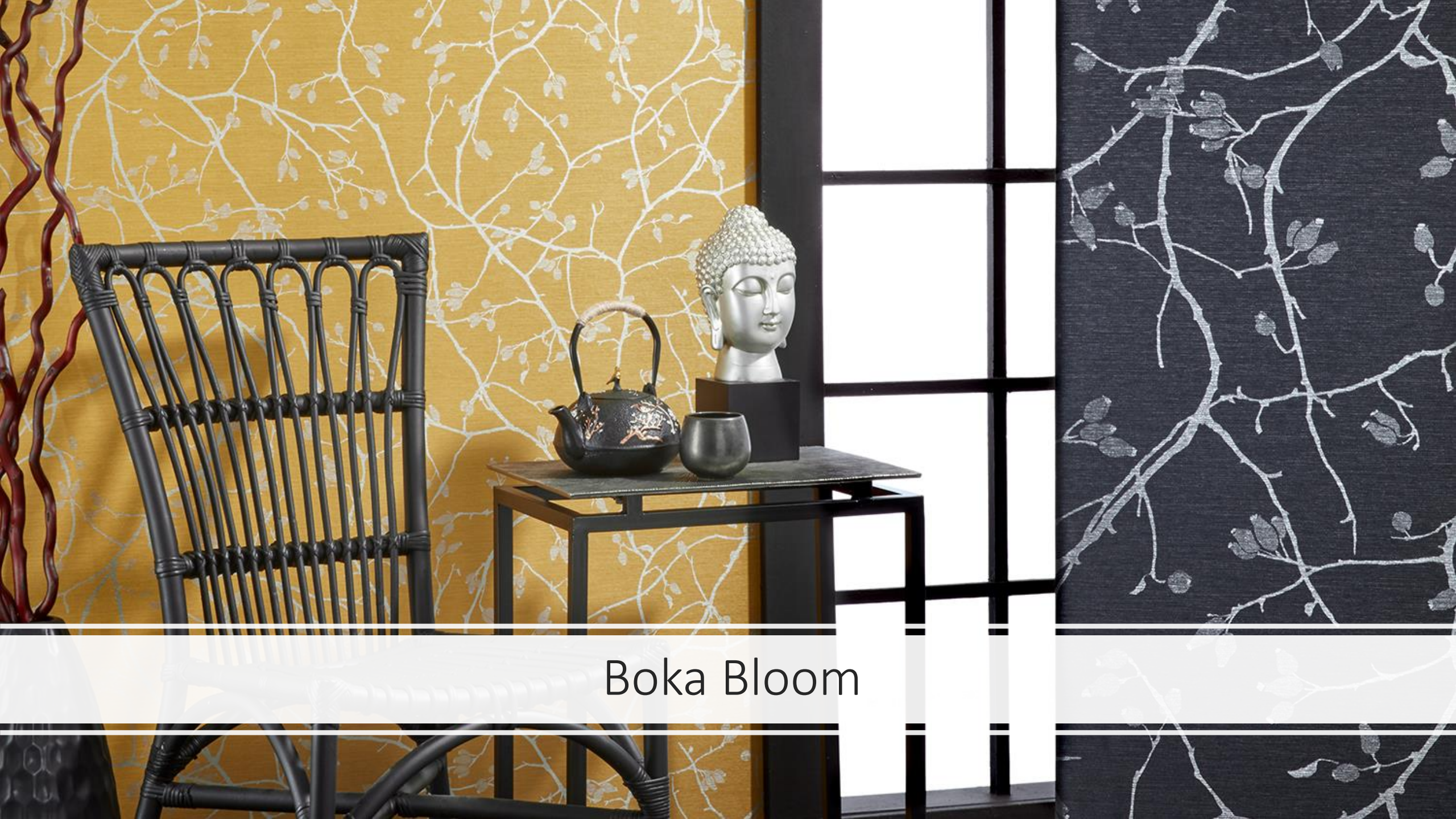


Canton Crepe Silk
Matte & Satin



Canton Rainsilk





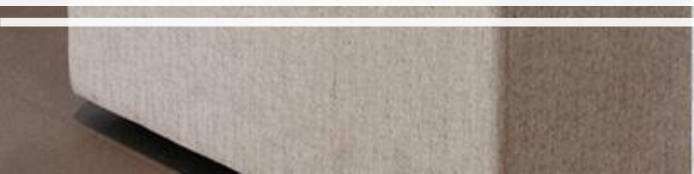
Boka Bloom



Toru



Lattice Silk





Farrah Chevron &
Farrah



Zaya



Ghost Concrete

CDIGITAL
IMAGING



SCALABILITY

This design is a raster-based image. It is created to be as scalable as possible, but the image may begin to degrade when scaled beyond 12 feet in height.



REPEAT

This design is not a repeating pattern. For significantly wide or tall installations, we will normally crop, stretch or mirror the design to fit your space.



COLOUR

This design primarily features colours that are textured, layered,





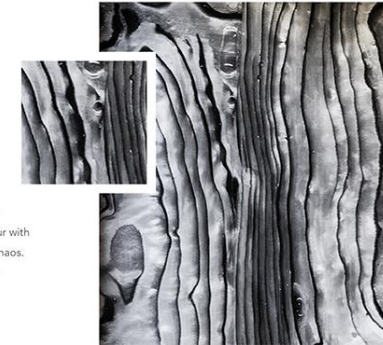
CDIGITAL
IMAGING



design | hotel charcoal

wall dimension:
12'h x 10'w

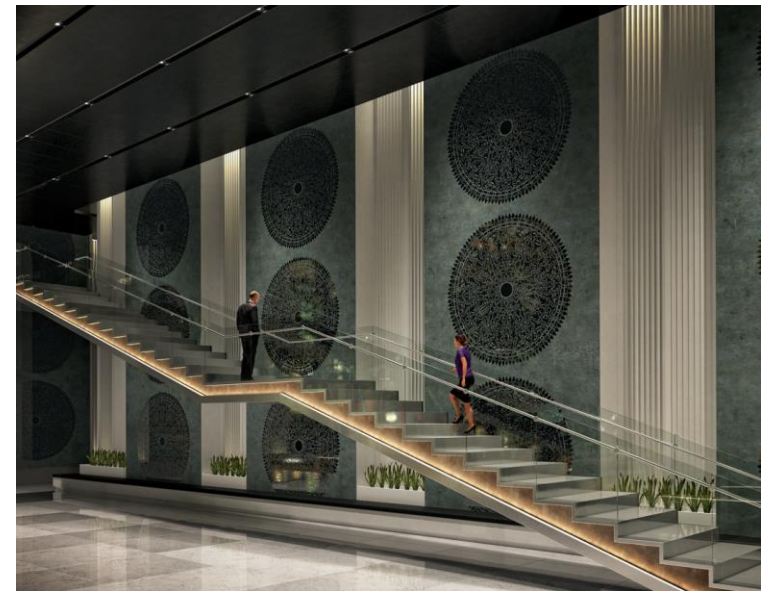
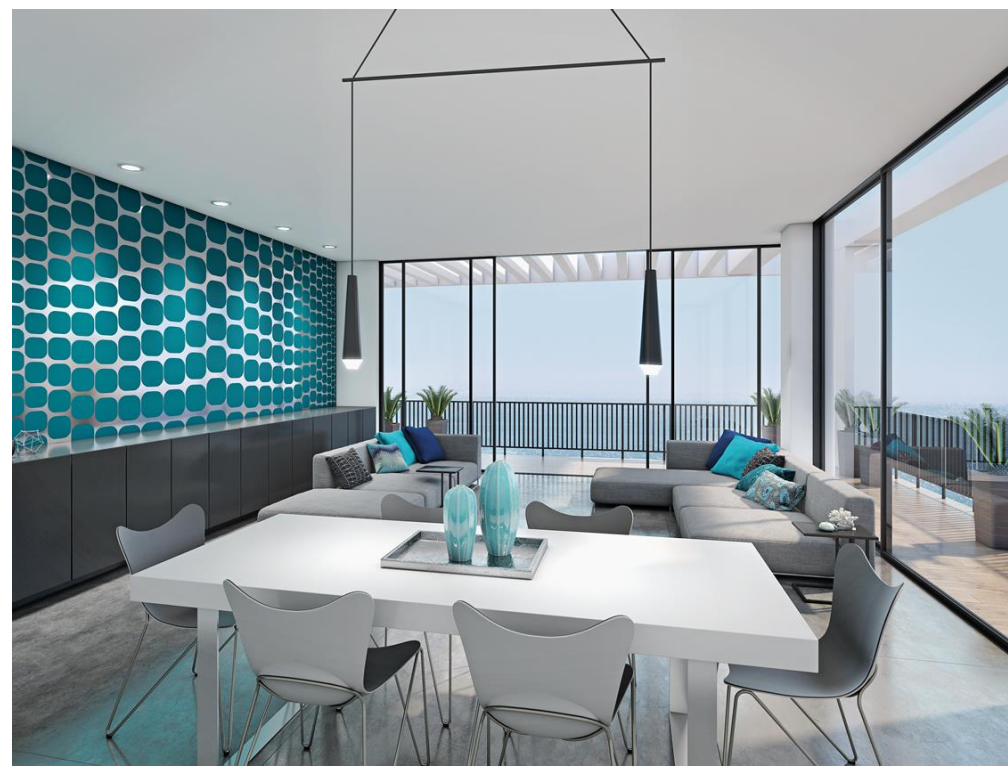
hue: charcoal

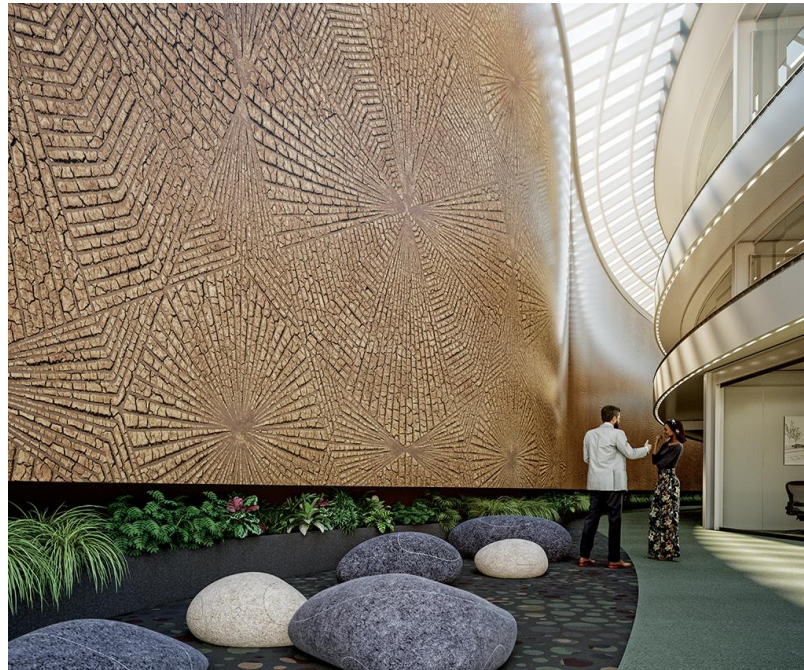
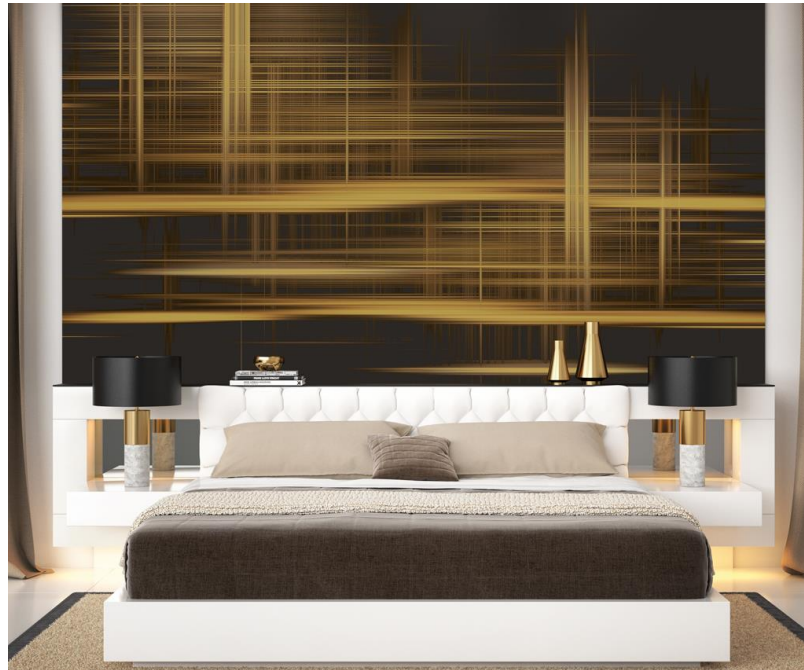


The digital era has spawned a whole
vein of abstract design. Intense colour with
mathematical plays off pattern and chaos.
A reflective mylar substrate provides
additional impact.

Hotel Charcol

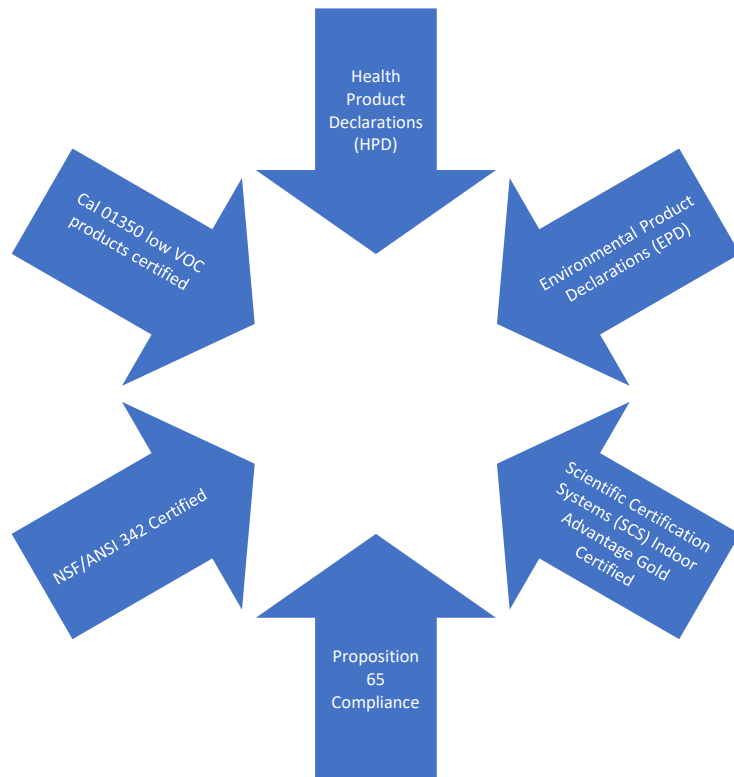






Commitment to Sustainability

Industry Initiatives



Corporate Initiatives

- USGBC Gold Certified Corporate office/studio/warehouse
- 100% offset of energy use with use of green-e certified off-site renewable wind power since 2010
- 100% offset of carbon emissions since 2010
- Energy star rated since 2010
- Diverted 88% of waste from landfill in 2017
- 2017 Repurposed discontinued wallcovering: to trade school for training wallcovering installers


Commitment to Sustainability

Product Contributions

- USGBC LEED
- Can contribute to CI/NC LEED® EQ 4.1 Low Emitting Materials: Adhesives & Sealants.
- Can contribute to CI/NC LEED® EQ 4.2 Low Emitting Materials: Paints & Coatings.
- Can contribute to CI/NC LEED® MR 5.1 Regional Material: 20% manufactured regionally within 500 miles of jobsite.
- Pilot Credit LEED BD+C: Healthcare|v4 – LEED v – Certified Multi-attribute Products and Materials. The Pilot Credit was created to recognize and incentivize interiors products third-party certified to multi-attribute sustainability standards that demonstrate optimized environmental performance in several environmental impact categories. The pilot credit includes recognition of the NSF 342/ANSI

Environmental Management System Annual Objectives

- Divert 50% of corporate office ongoing consumable waste from landfills
- Reduce 100% of environmental impact of energy use by converting to renewable wind energy
- Offset 100% of Green House Gas/carbon emissions for corporate office
- Offer consumers only Cal 01350 certified Low VOC products



Aqua-Clear TopCoat 3.0

- Since 1998, Colour & Design has offered many wall covering designs with AQUA-CLEAR Topcoat. A proprietary formulation developed to seal and protect the surface of wall covering products utilizing a blend of urethane, acrylic, and vinyl polymers, AQUA-CLEAR is a water-based, Teflon-free top coat with exceptional resistance to abrasion and staining.
- The formula has been recently modified to reflect the growing demand for an ultra-low emitting, water-based protective top coat with the following enhanced characteristics:
 - Improved abrasion resistance
 - Scrubability with sanctioned commercial cleaners(including bleach when diluted in water)
 - Non-yellowing surface





FASHION DESIGN RESOURCE

Thank you

- www.fashionadco.com
- 216-432-1600
- customerservice@fashionadco.com